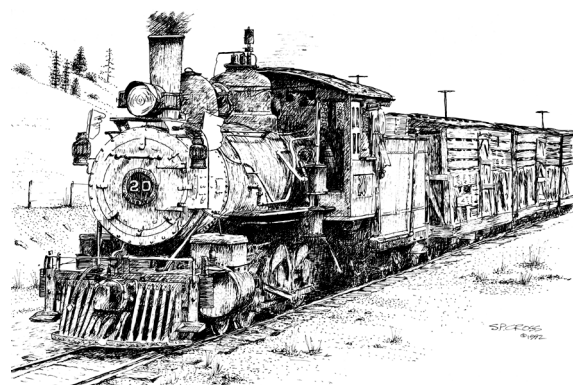


ROCKY MOUNTAIN RAIL REPORT



APRIL 2004

No. 535

ROCKY MOUNTAIN RAILROAD CLUB • ROCKY MOUNTAIN RAILROAD HISTORICAL FOUNDATION

Austrian Adventure

Presented by Dave and Jean Gross

April 15, 2004 • 7:30 PM

April's program will be the video production *Austrian Adventure*. Dave and Jean Gross ventured to Austria in September 2003 for a four day charter trip that featured Austrian steam locomotives pulling both passenger and mixed trains on non-electric branch lines through the gorgeous Austrian countryside. We first visit the Strasshoff Museum where a unique 2-6-4 passenger loco is readied for a trip to a wine festival. Then we follow a 2-4-0 through the Inn River Valley. The next locomotive will be a big 2-8-4 pulling a passenger train through the rolling hills of rural Austria. The video ends with an unusual 2-6-2 engine making its way over a soon to be closed branch line. These adventures will take you from the German border in western Austria then south of Vienna and into the mountains and ending on a quaint branch line in the northeast near the Czech Republic border. We think that you will enjoy the evening so please be sure to join us.

Bring a friend to see this video program. We meet at 7:30 PM at Christ Episcopal Church, 2950 South University Boulevard, at the intersection of University and Bates. There is plenty of parking at the rear of the building. The entrance to the meeting in Barnes Hall is on the south side of the building. **All programs are intended to provide an educational experience. The general public is welcome and there is no charge for this meeting.**

Choose Your Slides Now

Erwin Chaim will host the annual slide potpourri at the May meeting. You may give your selection of slides to Erwin at the April meeting, the Caboose Hobbies repair department or at his home at 560 Emerson Street. Erwin will not accept slides the night of the meeting. Please call Erwin at 303-777-7682 with questions.

This member night is an opportunity to showcase your talents. Some of the slide potpourri participants present programs for the following year. New talent is always welcome. Our club has many excellent photographers and members always like to see their work.

RMRRRC Trips And Events

By Don Hulse

Spring Fling To Glenwood Springs On Amtrak's California Zephyr April 24th and 25th

– The Amtrak Trip Is Sold Out –

Uhrich Locomotive Works Shop Tour, Museum Visit, Picnic Lunch, Train Ride and Movie Saturday, May 8th, 9:00 AM

Please see page 6 for details and use the insert in this *Rail Report* to order tickets.

Continued on Page 3, Column 1

2004 RMRRRC Events Schedule

April 24 & 25 Trip:	Amtrak to Glenwood Springs
May 8 Event:	Uhrich Shop Tour
May 11 Meeting:	Slide Potpourri
May 22 Event:	Club Picnic at Lakeside
June 8 Meeting:	Living Steam In Living B&W
July 13 Meeting:	Erie-Lackawanna East End
July 31 Trip:	Manitou and Pikes Peak Railway Moonlight Trip
August 10 Meeting:	Old Patagonian Express
August 21 Trip:	Leadville Colorado & Southern
September 14 Meeting:	Pikes Peak Region Railroads 1870-1900
October Event:	Annual Banquet
November 9 Meeting:	Video Potpourri
December 14 Meeting:	To Be Announced

The deadline for items to be included in
the *May Rail Report* is 4/19/04.

Steve Cross at Colorado Railroad Graphics
(303-699-9174) provided the drawing of
club engine number 20 for the *Rail Report*
cover. Other railroad artwork is available.

Artists Reception For Gil Bennett At Centennial Galleries

By Al Dunton

Club member Al Dunton and his wife Lynne opened Centennial Galleries, a new fine arts gallery in Fort Collins, CO. They invite all Club members, family and friends to a spectacular special exhibit of 75 original railroad paintings from 20 different artists on Saturday, April 17th, from 10 AM to 6 PM, and Sunday, April 18th, from Noon to 6 PM. The gallery is at 233 Linden Street in Historic Old Town Fort Collins, a block from the old UP Depot (now Sanford's Grub and Pub). You can call 970-221-5290 for directions.



"Hoopin' up Orders" – Oil on canvas by Gil Bennett
Denver & Rio Grande Western's Scenic Limited coasts through the summit at Tennessee Pass in 1941.

On Saturday, April 17th, from Noon to 4 PM, a reception will be held for noted artist Gil Bennett from Utah.

Gil is the most prolific railroad painter working today and his work has been favorably equated to famous railroad artists of the past. Twenty of Gil's paintings will be on exhibit, including several new works on display for the first time. Also on display will be the last painting started by Howard Fogg that Howard's wife Margo gave to Gil after Howard's death. Gil completed it in Howard's honor. Please come to meet and talk with Gil about his work.

Besides Gil's work, original paintings will be on exhibit from artists such as Howard Fogg, Ted Rose, Otto Kuhler, Mike Danneman, Jan Rons, Mike Pearsall, Robert West, Dave Etchells, Harlan Hiney and Robert Ward. Almost all are of Colorado subjects and several have been used in books, calendars and greeting cards. Don't miss this one of a kind show if you appreciate railroad art.

Denver Rail Heritage Society Quarterly Meeting

The Denver Rail Heritage Society, operator of the Platte Valley Trolley, will hold their quarterly membership meeting in the REI Sporting Goods Store near 15th Street and the Platte River on Tuesday, April 20th at 7:15 PM. The public is welcome. Please park in the underground garage. Gary Collins will present a slide program about present day historic electric cars operating in California. Contact Darrell Arndt at 303-797-8444 for more information.

Renewal Reminder Have You Paid Your Dues? Is Your Address Label In Color?

If you received a color address label on your newsletter this month, that means we do not have a record of receiving your dues payment for 2004. Please contact Dave Goss at 303-693-9933 or m1ck11@comcast.net if the records are in error or with questions.

Please mail your renewals as soon as possible. You will not receive another newsletter until you are paid in full.

Publishers Statement

Rocky Mountain Rail Report

The Rocky Mountain Rail Report (ISSN 1040-9223) is published by the Rocky Mountain Railroad Club and the Rocky Mountain Railroad Historical Foundation. First class postage paid at Denver, Colorado. Postmaster: Send address changes to the Rocky Mountain Rail Report, PO Box 2391, Denver, CO 80201-2391

Club Information

Rocky Mountain Railroad Club
PO Box 2391
Denver, CO 80201-2391
Club Phone: 303-979-2806
Club Website:
<http://www.rockymtnrrclub.org>

Membership Information

Membership in the Rocky Mountain Railroad Club may be obtained by sending the annual dues to the club address listed above. Regular membership dues are \$35.00. Overseas regular membership dues are \$45.00. Contributing membership is \$50.00. Sustaining membership is \$70.00. Patron membership is \$100.00. Golden membership is \$500.00. An associate membership for spouses and children is \$25.00 additional. Members joining after April may send a payment of \$3.00 for each month remaining in the year. Members of the Rocky Mountain Railroad Club are also members in the Rocky Mountain Railroad Historical Foundation, the non-profit arm of the Rocky Mountain Railroad Club.

Club Officers

President	Mike Gailus
Vice President	Steve Mason
Secretary	Roger Sherman
Treasurer	Dave Goss

Board Meetings

Members are always welcome to attend any board of directors meeting. They are held on the Thursday preceding the monthly meeting. Please call the Club's telephone Information Line at 303-979-2806 or contact any Club officer for the date, time and location.

Newsletter Contributions

Newsletter contributions and items for publication should be sent to:

Bruce Nall, Editor
Rocky Mountain Rail Report
PO Box 620579
Littleton, CO 80162-0579
Fax: 303-978-0402
E-mail: selectimag@aol.com

RMRRRC Trips And Events

Continued from Page1, Column 2

Lakeside Amusement Park Picnic Saturday, May 22nd, Noon

Enjoy a catered lunch at the picnic pavilion at Noon then ride the trains until the park closes. The steam engines are scheduled to operate around the lake. \$30.00 for adults and \$22.00 for children 12 years and younger. Please use the insert in this *Rail Report* to order tickets.

Blue Moon Pikes Peak Trip Special Saturday, July 31st, 6:00 PM

Ride the Pikes Peak Cog Railway from Manitou Springs to the top of Pikes Peak. The train will leave Manitou Springs at 6:00 PM and gain 8,000 feet of elevation as it travels to 14,110 feet above sea level. The return from the peak is planned for 9:00 PM. There is food available (on your own) in Manitou Springs or at the restaurant on the peak. You can also bring your own bag or box dinner on the train. Saturday, July 31st, is a "Blue Moon," the second full moon in July. Watch the *Rail Report* for details.

Leadville, Colorado and Southern Saturday, August 21st

Fifty passengers will depart from the old 1893 Leadville depot and travel about an hour and a half on this last remaining segment of the DSP&P to Climax at the top of Fremont Pass. Watch the *Rail Report* for details.

In Remembrance Alvin Voight

The Rocky Mountain Railroad Club is saddened to record the passing of Alvin Voight on March 15th. Alvin held membership card 37 and had been a member since 1955. He was a native of Boulder, Colorado, and a graduate of the University of Colorado in pharmacology and chemistry. He worked as a chemist at the Rocky Flats plant near Boulder.

Alvin was a frequent rider on Club trips, especially the traditional Memorial Day excursions of the 1950s. He was a fan of the D&RG narrow gauge, and had an extensive collection of scale model equipment. He was also a member of the Colorado Railroad Museum.



A group of RMRRRC eastern division members from left to right: Philip A. Ronfor, Stanley Bradley (front), Michael Koch (known for his books on Shay engines), Thomas Gilbert, Irv E. August (front - who was living back east then), John R. Krause and Morris W. Abbott (who wrote *The Pike's Peak Cog Road* in 1972). – Photo © Andrew Wittenborn.

RMRRRC Eastern Division

By Andy Wittenborn

Back in the 1950's there was an eastern division of the RMRRRC. I was fortunate to attend a number of these meetings as a teenager. I met people I never thought I would meet, like artist/photographer Phil Ronfor. This picture was taken on October 24, 1953, at Irv August's home in Longmeadow, Massachusetts. The Coors beer had to be sent from Colorado as it was not available in the east at that time. The 1953 RMRRRC roster listed 18 eastern division members.

Special Offer To Club Members Denver's Street Railways Volume II 1901 - 1950

To help in the Foundation's restoration efforts of D&IM Interurban car No. 25, Sundance publications has allowed The Rocky Mountain Railroad Historical Foundation to sell *Denver's Street Railways* to Club members. The profits from these sales will go toward the restoration costs.

So please help out the restoration of Car No. 25 and order your book now to get 10% off the cover price! See the order form enclosed in this *Rail Report*.

Spring Cleaning with No. 25 By Darrell Arndt

We are about finished with our "spring cleaning" effort in Federal Center Building 78 where the No. 25 is stored. All our parts and various components are now stored in labeled, plastic containers on shelves. Our wire is now on racks for easy access, sandpaper is organized and old and new screws, bolts, nuts, washers and miscellaneous fasteners have been sorted and arranged in storage cabinet compartments. Old screws and parts have been re-cataloged and listed on computer files.

Paper data has been organized in file cabinets provided by Matt Anderson and our wood supply is being reviewed for surplus as we strive to "downsize" materials that we will no longer need. This is a project that has been long overdue and will provide a better working environment and ease the final work to be done on the car.

OS Colorado

Current Railroad Happenings

By Chip Sherman

"OS" are the initials for On the Sheets, a reference to what station agents did to notify the train dispatcher that a train had passed his/her station and been noted on the train register. OS Colorado is a joint effort to note the rail activities occurring in and around Colorado.

Unit Trains Head for Fort Polk, LA

BNSF was busy in late February and early March 2004 moving Fort Lewis based units by rail for training at Fort Polk, LA. Several trains were operated. The first unit train operated down South Mason Street (street running) at Fort Collins, CO, on 2/25/04. Heritage I painted SD40-2 7860 and 7150 were the power on the 61-car train. Following was another unit military train with five BNSF units out of Cheyenne, WY. BNSF Heritage II painted SD70MAC 9974 was the lead unit. Both trains operated on the Front Range Subdivision, the former Colorado & Southern line through Loveland and Boulder, CO.

Aboard the trains were 8-wheeled Stryker medium armored vehicles (MAV). General Motors General Dynamics Land Systems is the same firm that builds light armored vehicles (LAVs), known as the LAV III, for the Marine Corps. The Army is forming Stryker Brigades with these MAV's. These were Stryker units from Fort Lewis, WA. Each brigade will have more than 300 MAVs.

BNSF Dash 9-44CW 742 lead a military train that rolled by Larkspur, CO, on 2/27/04 around 2:00 PM. This train had been held at Hogan's Alley in Denver most of Thursday, 2/26/04. The unit trains were on their way to the Joint Readiness Training Center (JRTC) at Ft. Polk, LA, to train. They'll likely deploy either to Afghanistan or Iraq this fall.

Montana Rail Link power, SD45 361 (ex-New York, Susquehanna & Western), lead another unit military train moving south of Pueblo, CO, on 3/2/04. The power was MRL 361, National Railway Equipment (NREX) 5470 and BNSF 6776.

—Thanks to our friends along the lines



Traffic was cleared off South Mason Street in Fort Collins, CO, as BNSF unit military train from Fort Lewis, WA, to Fort Polk, LA, rolled southward on 2/25/04. Two SD40-2s, 7860 & 7150, both painted Heritage I, handled the first of several trains that week.

— Photo © Chip.

BNSF 5600s Move Xcel Minnequa Coal

A pair of BNSFs AC4400CWs, 5620 & 5692, departed Sterling, CO, about 8:00 AM, on 3/18/04 with the 123 car C BAMMIC 056 (Belle Ayr Mine, WY, to Xcel power plant at Minnequa near Pueblo, CO) coal load. Rear distributed power units were SD70MACs 9764 and 9966. New General Electric built AC power locomotives continue to make inroads moving BNSF coal.

EMD's New SD70ACe GM 70 Moved to Chicago

EMD's test car ET-820 and GM 70 were moved from the Transportation Technology Center (TTC) by BNSF's local from La Junta to Pueblo, CO on 3/2/04. The blue and white painted SD70ACe demonstrator, GM 70, had been at the TTC for several months. The BNSF picked up the equipment at Avondale, CO. BNSF moved them to Pueblo where they were given to Union Pacific.

UP moved them the evening of March 2nd north on their Pueblo to North Yard, Denver train. The afternoon of March 3rd they were placed on the North Yard, Denver to North Platte, NE, train. Ride quality testing using instrumentation was done on UP trains as the pair headed for

Chicago, IL. Departing Denver the train had SD9043AC 8515, AC4400CW 7125, HLCX SD40-2 6302, EMD test car ET-820 and GM 70 (aka GMDX 1000). The train met a southbound train with UP 9447 at Hazeltine Siding south of Brighton, CO.

The southbound train had flatcar spacers with a rocket motor headed for the Kennedy Space Center. On the rear was a Department of Defense escort caboose painted dark blue.

With UP 9447 gone, the UP 8515 rolled north passing through Brighton about 4:30 PM. Variety on the UP's Greeley line.

SOO 6041 on BNSF Grain Empty

BNSF continues to use a variety of CSXT, Canadian National, First Union (FURX) and Norfolk Southern units on its trains across Colorado. BNSF grain empty from Barstow, CA, to McCook, NE, had Soo Line SD60M 6041. The power leaving Trinidad, CO, the morning of 3/18/04 was BNSF 9-44CW 4400, 4960 and Soo 6041.

BNSF's Denver to Amarillo, TX, train M DENAMA1 17, left Pueblo, CO, the morning of 3/18/04 with First Union (FURX) SD40-2 7211 an ex-BN 7211, CN SD75I 5670 and CN SD75I 5668.



BNSF operated several Fort Lewis, WA, unit trains in February and early March 2004. Trailer Train flatcar 912251 was on Hogan's Alley, Denver, CO, 2/26/04 with Stryker Medium Armored Vehicles (MAV).
 -Photo © Chip.

Rerouted Union Pacific Z-Trains

The UPs Z LACS/Z CSLA (Los Angeles, CA, to Canal Street, Chicago, IL) trains were rerouted via the Los Angeles & Salt Lake/Overland route March 7-13, 2004 due to the congestion on the Sunset Route. That pattern continued the next week, March 14-20, with a bit of a change. The eastbound Z LACS trains were being run via the Overland routing while the westbound counterparts were coming west via the normal Golden State/Sunset routing.

The two UPS Super Zs that week were also routed via different routes as the Z LALF2/16 was routed east through Salt Lake City (Overland) March 16, 2004, while the westbound Z LFLA3/17 ran on the normal routing through Kansas/NM/AZ as of March 17. It appeared that the eastbound Z LALF2 (Los Angeles, CA, to Little Ferry, NJ, where United Parcel Service has large facility) was making good time via the slightly longer route as it was only a few minutes off schedule the afternoon of March 17th (out around Grand Island, NE). -Boomer

Chicago & North Western Units Fading

The C&NW paint scheme will soon fade from UP ranks. Union Pacific continues repainting pre-merger units at their North Little Rock, Arkansas, shop.

Union Pacific also continues to re-engine

and renumber Chicago & North Western units. The following AC4400CW C&NW 8800s were renumbered at UP's Denver locomotive Shop (Burnham Shops):

CNW 8808 became UP 6710 in mid-February 2003

CNW 8820 became UP 6722 March 4, 2004

CNW 8823 was renumbered UP 6725 in April 2003

CNW 8824 was renumbered UP 6726 in August 2003

CNW 8828 got a new prime mover in January 2004 and retains CNW number

CNW 8829 was renumbered UP 6731 in May 2003

CNW 8832 was renumbered UP 6734 February 15, 2004

Ski Train Late into Denver on March 19

The Anso Ski Train was delayed almost five hours due to a BNSF freight train on Union Pacific's Moffat Tunnel Line on 3/19/04. A westbound BNSF (Denver to Stockton, CA) train developed locomotive problems between Plain and Crescent Sidings about 5:00 PM. Due to the rugged mountain area, access was unavailable by road for maintenance personnel. Another BNSF train at Crescent had to assist the

power troubled westbound BNSF train. The BNSF trains had to be tied down (brakes applied to most cars) while locomotive swapping was done. Each train had one conductor and one engineer. It takes awhile tying and untying brakes on trains in tunnels in mountainous terrain.

The Ski Train left Winter Park Ski Resort at 4:15 PM. It ran east to Pinecliffe where it was held. The Union Pacific crew had to back the Ski Train back west almost to Winter Park again. "Well there's 14 cars with 50 people on each car and they've basically run out of water and food," said Mark Detert. He said he was surrounded by a lot of frustrated passengers.

The train started moving toward Denver again around 9:30 PM. It arrived at Denver Union Station about 11:15 PM. The 17-car train typically returns to Denver Union Station by 6:30 PM.

Where Are UP 9997, 9998 & 9999 Now?

Union Pacific renumbered their highest numbered AC4400's back in 2003. UP 9997 became UP 6700 (renumbered Aug 29, 2003) and UP 9999 became UP 6702 (renumbered December 15, 2000) where the rest of the AC4400CW's are rostered. General Electric listed these 4380 horsepower units as AC4400CW. UP considers them model C44AC. UP 9997-9999 were built in 1994.

Road Number	Builder's Date	Builder's Number	New Number	Date To New Number
9997	11/94	47634	6700	8/29/03
9998	11/94	47635	6701	7/23/99
9999	10/94	47636	6702	12/15/00

UP 9997 was completed during August 1994 but was held by GE for additional engineering tests - delivered to UP in November 1994.

UP 9998 was wrecked on September 12, 1998, at Shawnee Junction, WY. The wreck damage was repaired by CEECO in Tacoma, WA. UP 9998 was returned to service as UP 6701 on July 23, 1999.
 -Thanks to Don Strack for UP roster info

Uhrich Locomotive Works Shop Tour, Museum Visit, Picnic Lunch, Train Ride and Movie

Saturday, May 8th, 9:00 AM

By Barry Smith – Photos courtesy of Joane and Rob Thain

Have you ever visited the Uhrich Locomotive Works? Well, lets go! We will meet at the Strasburg shop at 9:00 AM. There is more to this tour than you might think. The Uhrich shop foreman will give us a tour of their machine shop where they machine parts for live steam engines. A bronze casting demonstration is planned for our group.

We will also tour the Comanche Crossing Museum and ride behind steam on the 15-inch Comanche Crossing & Eastern Railroad. We will see a vintage movie in Strasburg's historic old movie theatre dating from the World War I years.

Lunch in the Thain picnic grove is included. \$20.00 covers the entire day. Use the order form enclosed in this *Rail Report* to sign up for this day of fun. Car pooling is encouraged - contact Barry Smith to arrange rides. The registration deadline is April 28th and only 60 tickets are available. Contact Barry Smith, trip leader, at 303-757-6050 with questions.



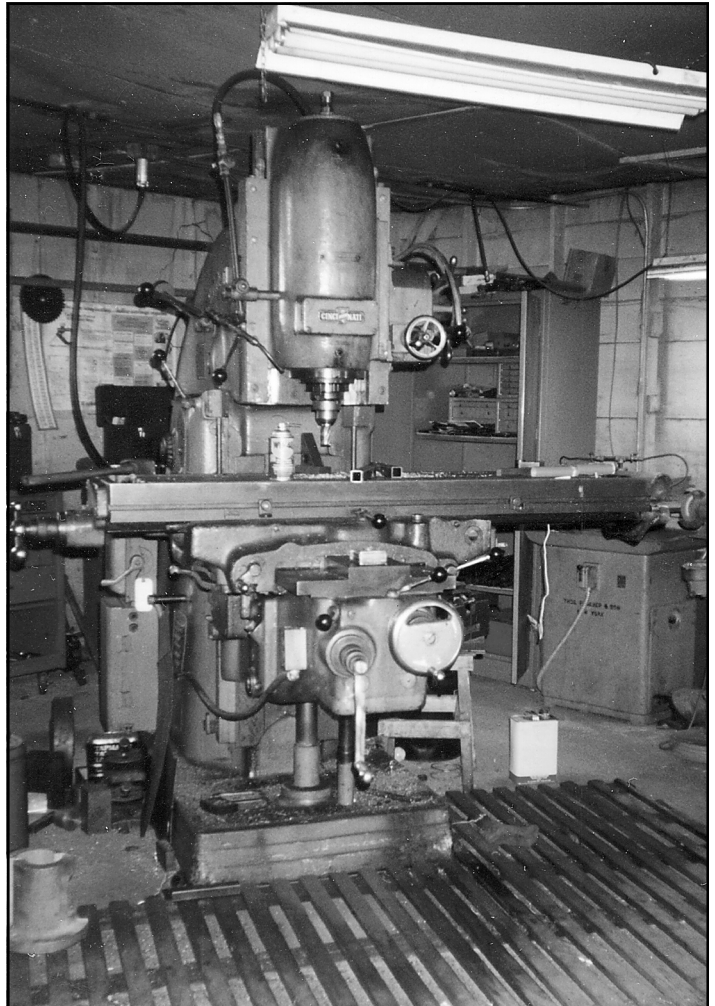
Engine No. 463, a 5/12 scale replica of a D&RGW class K-27 2-8-2, crosses trestle #3 on the Comanche Crossing & Eastern Railroad.



Engine No. 1, a 15-inch gauge "old time" 2-6-0, crosses trestle #2 on the Comanche Crossing & Eastern Railroad.



Enjoy a delicious lunch in the Thain picnic grove.



A milling machine in the Uhrich Locomotive Shops.

O. Winston Link Museum Open

A museum devoted to the work of the late O. Winston Link, who was acclaimed for his dramatically lit black and white photographs of trains and railroad towns, opened in a newly renovated historic railroad passenger station in January 2004. The museum's organizing curator is Tom Garver, a former assistant to Link. Garver, a retired art museum director, is the author of the second book of Link's photos, *The Last Steam Railroad in America*, and was Link's agent for the last seven years of his life.

The 15,000-square-foot O. Winston Link Museum houses the largest collection of the photographer's work including 190 signed prints and 85 estate prints, and eventually all 2,400 of Link's negatives. The collection may include recently recovered stolen prints recovered after they appeared on an Internet auction site.

Link photographed the Norfolk & Western Railway's steam locomotives as they passed through the towns of Virginia, West Virginia, North Carolina, and Maryland from 1955 until 1960, when steam operations were terminated. Besides creating technically perfect images through the use of a complex synchronized flash system, Link's work captured the end of an American way of life. In addition to the photographer's

work, the O. Winston Link Museum exhibits Link's photographic equipment, prints not on formal display and N&W Railway artifacts. A virtual rail experience will allow visitors to "take a trip" to the towns he photographed.

A successful independent photographer from New York, Link became fascinated with locomotives during his childhood, and he loved the simple beauty of the Southern towns along the lines of the N&W Railway. His work became widely recognized in the 1980s with the publication of *Steam, Steel & Stars*, a compilation of his photographs, and he was named one of "Photography's Grand Masters" by Vanity Fair in 2001.

Link declined numerous offers of exclusive exhibits by several notable museums because he wanted a permanent collection of his photographs to be displayed in a place that provided context for his work. He requested before his death in 2001 that a museum bearing his name be located in the old N&W Railway passenger station in Roanoke, where he took some of his photographs. "My father wanted that," said W. Conway Link, O. Winston Link's son and a trustee of the estate. "Not only will the restored station be preserved, but it will be used as a museum featuring my dad's N & W

photographs." The photographer was actively involved in the planning of the O. Winston Link Museum when he died of a heart attack at age 86 in January 2001 near his South Salem, NY, home.

The N&W passenger station was built in 1905 and redesigned in 1947 by world-renowned industrial designer Raymond Loewy. It served as the hub of five main rail lines radiating in all directions to points in Ohio, North Carolina, Maryland, and Tennessee. Upon the completion of the \$9.1 million renovation, the art moderne building will once again become a gateway to the region. In addition to the O. Winston Link Museum, the newly renovated N&W passenger station will house, in a separate space, the Roanoke Valley Convention and Visitors Bureau.

The O. Winston Link Museum is a partnership of the History Museum and Historical Society of Western Virginia and Center in the Square. It is being funded through public and private sources including local, state and federal grants, foundation grants, and corporate and individual donors around the world. For more information, call the History Museum and Historical Society of Western Virginia at 540/342-5770 or visit www.linkmuseum.org.

Georgetown Loop Railroad Calling It Quits?

Trainorders Internet Site, Trainorders.com

A long time favorite Colorado destination attraction may be closing. The Georgetown Loop Historic Mining & Railroad Park may begin its final season on May 29th with daily trains running through October 3 unless a new agreement with the Colorado Historical Society is reached.

For 30 years the train operation has been a family business that served passengers from around the world. Last year alone, 115,000 people rode the train. The same family owns the Royal Gorge Route Railroad in Canon City.

Another Colorado Joint Line Rail Camera

By Robert Beyer

Another webcam up the track about 50 miles from mine is online. There is a lot of light rail action visible. The camera is near the end of the RTD light rail line in Littleton, CO. When the camera detects motion in certain areas, it saves the image to the website so most images will have a train visible.

The camera at milepost 10.1 can be viewed at:
<http://www.trainshots.us/jlcamlatestar.html>

My camera at milepost 57.7, south switch, Monument, CO, siding is still on line at:
<http://railview.net/webcam/>

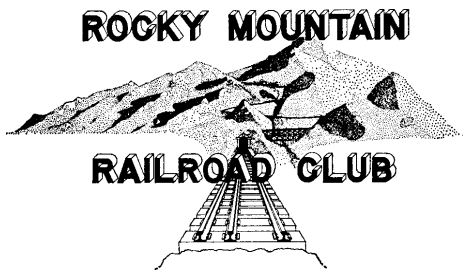
US and Canadian Steam Excursions

By Steve Mason

Member John McIvor, of England, has a web site that lists nearly all of the steam excursions planned for 2004 in the US and Canada. The layout is by month chronologically so it is easy to use.

The site lists where the trip is going, the type of locomotive being used, the itinerary and who is running the trip. You will be surprised at the number of excursions.

To see the list, go to:
www.s-v-s.co.uk/trains/diary.htm



BOX 2391
DENVER, COLORADO 80201

FIRST CLASS

FIRST CLASS MAIL
U. S. Postage
PAID
Denver, Colorado
Permit No. 1873



If you have a color newsletter address label, we have not received your 2004 dues payment. See page 2 for information.

**Colorado Railroad Museum
2004 Scheduled Special
Operation Days**
For information call 303-279-4591

April 10:	Bunny Express
June 19 & 20:	Father's Day
August 14 & 15:	Garden Railway Convention
October 8-10 & 16-17:	A Day Out With Thomas
December 4 & 5:	Santa Claus Special

The Club's equipment committee works on the Club owned equipment at the Colorado Railroad Museum on the second and fourth Saturdays of each month. Any Club member is invited to join in the restoration and maintenance of historic equipment.

Call Bob Tully at 303-428-2322 for details.

Intermountain Chapter, NRHS 2004 Event Schedule
For information call 303-298-0377

April 16:	Dinner meeting at Rossi's: "Salida and the Monarch Branch" presented by railroad historian, photographer, author, and Chapter member Jim Ozment.	Reservations are required. Cash bar at 6:30, dinner at 7:00, program at 8:00. \$12 per person for dinner and program. Program only is \$5 per person to defray the cost of the program (and any leftover dessert and beverages) - please arrive by 7:45 PM.
-----------	--	---

Trains Unlimited, Tours 2004 Trip Schedule
For TUT information call 1-800-359-4870
or visit our web page at: www.trainsunlimitedtours.com/rmrrc/

April 15-18	Domes To Reno	August 7-9	Pacific Coast Domes
April 22-May 6	Great Canadian Rail Adventure	Aug. 19-Sept. 2	Great Peruvian Rail Adventure
April 26-May 3	Canadian Steam	August 27-29	Domes To Feather River RR Days
May 1-2	Caribou Express	Sept. 19-Oct. 2	China Steam Spectacular
May 15	McCloud Steam	Sept. 27-28	Rio Grande Photo Freight
June 10-20	Alaskan Railfan Adventure	Sept. 29	Durango Photo Special
June 10-13	White Pass Steam	October 2-3	Nevada Northern
July 2-8	Domes To The Pacific Northwest	October 2-9	New England Fall Colors
July 4	Domes To Canada	Oct. 28-Nov. 12	The Old Patagonian Express
July 6	Stampede Pass Rail Adventure	November 11-17	Mexican Copper Canyon